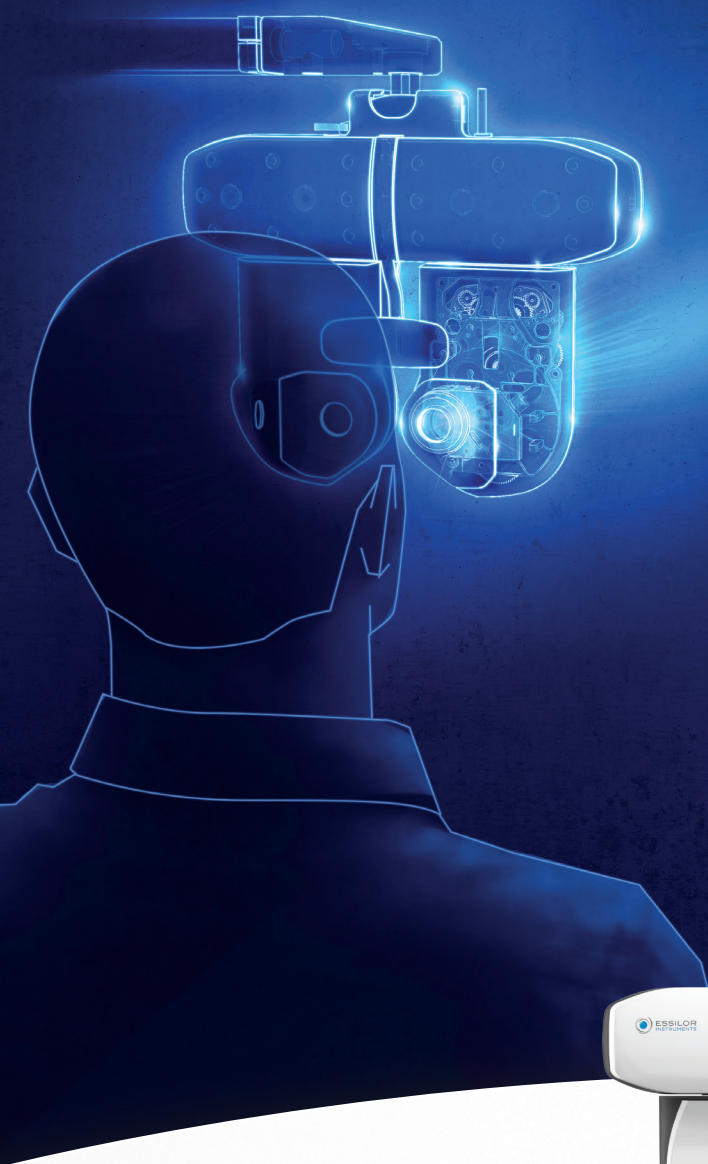


NEW RELEASE WITH CUSTOMIZATION

OFFER YOUR PATIENTS
THE BEST OF THEIR VISION



VISION-R™ 800

REINVENTING REFRACTION



ESSILOR
INSTRUMENTS

VISION-R™ 800

ADAPTS TO THE DAILY REALITIES OF YOUR PRACTICE

With its new software version, Vision-R™ 800 enables you to:

- 1 Customize your phoropter to meet your precise needs
- 2 Choose the data you want to export



1 CUSTOMIZE YOUR PHOROPTER TO MEET YOUR PRECISE NEEDS

Want to adapt your Vision-R™ 800 phoropter to the needs of your practice?

The flexibility of its new software means you can now build your own refraction programs, create your own library of favorite tests and configure your own refraction tests.

Used to your own refraction method?
Want to standardize the method used by your staff?

BUILD YOUR OWN REFRACTION PROGRAMS

Drag & drop



- Select the tests you want to run
 - Create your own refraction program based on the tests provided or by customizing them
 - Name it whatever you want!
- By selecting this program, the tests will be sequenced the way you want them.

Used to performing particular refraction tests?
Want to find them whenever you need them?

CREATE YOUR OWN LIBRARY OF FAVORITE TESTS



- Choose your favorite tests from the bank of available tests
 - Store them in your own library of tests
 - Name them as you wish!
- Your favorite tests will then be easily accessible.

Are your usual refraction tests not available in Vision-R™ 800?
Would you like to customize one of the tests?

CONFIGURE YOUR OWN REFRACTION TESTS



- Select an existing test
 - Customize it as you wish
 - Name it as you like
 - Store it in your library!
- It will then be available at any time during your refraction exam, and you can also insert it into your own refraction programs.

2 CHOOSE THE DATA YOU WANT TO EXPORT

Once your refraction exam is complete, it is time to store your patient's refraction test results and upload them to your business software or printer using the Essilor Instruments' connectivity tool *.

Vision-R™ 800 lets you select the data to be exported and adjust its format.

By default, **only the exact refraction data is exported**; if you have measured the distance between the Vision-R™ 800 phoropter and your patient's eye, the data will be adjusted to the standard 12 mm vertex distance. If you have not measured it, the vertex distance will not be taken into account.

VISION-R™ 800 ALSO OFFERS YOU OTHER OPTIONS

- Export the refraction data rounded to the nearest quarter diopter, using any one of the four methods offered by the software; both values, exact to 0.01 D and rounded to 0.25 D are always saved
- Generate a refraction for contact lenses by calculating the refractive adjustment for a vertex distance of 0 mm
- Generate a refraction for near vision by combining distance vision correction and the addition for near vision
- Maintain objective refraction using an auto-refractometer or retinoscopy
- Keep the previous refraction data, as measured from the patient's spectacles or imported from the patient's records
- Retain any refraction value saved in one of the 7 memories of the Vision-R™ 800.

EXPORT THE REFRACTION DATA YOUR WAY

Data for export could be selected in a number of different ways:

- systematically for all your patients, in the data export settings of the Vision-R™ 800
- specifically for each patient, at the end of the refraction exam
- by combining both options: systematic data export with patient-specific selection.

EXAMPLE OF AN EXPORT CONFIGURATION

Let's suppose the following refraction has been measured with an eye-phoropter distance of 10 mm:
 RE : -8.11 (-2.82) 18
 LE : -7.94 (-1.69) 67

We choose the default configuration as follows:

TO EXPORT SYSTEMATICALLY (on a blue background):

1. the new refraction, projected to infinity, adjusted to the standard 12 mm vertex distance, in exact value at 0.01 D and rounded to 0.25 D by the best binocular balance method
2. the value of the objective refraction measured with an auto-refractometer.

TO OFFER AS A SELECTION OPTION (on a grey background):

3. the new refraction for a contact lens prescription, adjusted to the vertex distance of 0 mm, and in exact and rounded values.



* The Vision-R™ 800 phoropter is natively integrated into the Essilor Instruments' connectivity package.

As improvements are made, these specifications and pictures are not contractually binding and may be changed without prior notice. Vision-R™ 800 is a trademark of Essilor International.



ESSILOR INSTRUMENTS
 81 boulevard Jean-Baptiste Oudry
 94000 Créteil
 France
 Tel. : +33 (0)1 49 80 62 80
 www.essilor-instruments.com

